



TECHNICAL REGULATIONS

CONFERENCE AREAS

2025

Event your business.



Deutsche Messe

Contents

1.	Scope and General Regulations	5
1.1	Scope of Regulations	5
1.2	General Regulations	5
2.	Traffic regulations, escape routes, safety installations	5
2.1	Traffic regulations	5
2.2	Escape routes	6
2.3	Safety installations	6
2.4	Security	6
2.5	Emergency evacuation	6
3.	Technical specifications and load limits for conference areas	6
3.1	Auditoriums, rooms, foyers	6
3.1.1	Lighting, type of current, voltage	6
3.1.2	Power, water, and compressed air supply	7
3.1.3	Telecommunication lines	7
3.1.3.1	Exhibitor's own Wi-Fi (WLAN)	7
3.1.3.2	Use of beacons	7
3.1.3.3	5G	7
3.2	Conference areas / Technical information	8
3.2.1	Technical information on conference area Convention Center (CC), First Floor	8
3.2.2	Technical information on conference area Convention Center (CC), Ground Floor	9
3.2.3	Arcade Rooms Convention Center (CC) Ground Floor	9
3.2.4	Technical information on conference area Hall 19, First Floor	10
3.2.5	Technical information on conference area Hall 19, Ground Floor	11
4.	Building Regulations for Decoration Structures and Stands	12
4.1	Structural stability and safety	12
4.1.1	Changes to stand constructions not in accordance with regulations	12
4.2	Approval of stands	12
4.2.1	Inspection and release of decoration structures and exhibits requiring approval	12
4.2.2	Modification of noncompliant structures	12
4.3	Heights of structures	12
4.4	Fire prevention and safety	13
4.4.1	Fire prevention	13
4.4.1.1	Decoration and stand setup materials	13
4.4.1.2	Displaying vehicles	13
4.4.1.3	Explosive materials and ammunition	13
4.4.1.4	Pyrotechnics	14
4.4.1.5	Balloons	14
4.4.1.6	Flying objects	14
4.4.1.7	Fog machines / Hazer	14
4.4.1.8	Open fires and flames	14
4.4.1.9	Welding, cutting, and similar work	14
4.4.1.10	Storage	14
4.4.1.11	Fire extinguishers	14
4.4.2	Horizontal enclosures and sprinklers	15
4.4.3	Glass and acrylics	15

	4.5	Exits and escape routes	15
	4.6	Platforms, ladders, stairs, raised walkways	15
	4.7	Layout	15
	4.7.1	Use of spaces	15
	4.7.1.1	Inspection of spaces	15
	4.7.1.2	Layout and machinery placement	15
	4.7.2	Alteration of building structure	16
	4.7.3	Floors	16
NEW	4.7.4	Suspension of objects	16
	4.7.5	Advertising and shows	16
	4.7.6	Barrier-free construction	16
	4.7.7	Laying of supply lines and inspection openings	17
	4.7.8	Kitchens	17
	4.8	Outside areas	17
	4.8.1	Structures outside of the Convention Center	17
	4.8.2	Design loads, wind and snow loads outside of the Convention Center	17
	4.8.3	Lightning protection	17
	4.8.4	Heating systems and devices	18
	5.	Operating safety, technical safety regulations, technical services	18
	5.1	General information	18
	5.2	Use of machines and equipment	18
	5.3	Seating plans and capacities	18
	5.4	Loads suspended above persons	18
	5.5	Electrical installations	19
	5.5.1	Power hookups	19
	5.5.2	Mobile electrical systems and operating equipment	19
	5.5.3	Installation within a stand	19
	5.5.4	Installation and operation	19
	5.5.5	Safety precautions	19
	5.5.6	Safety lighting	19
NEW	5.6	Machinery, pressure vessel, and exhaust gas installations	19
	5.6.1	Noise control	19
	5.6.2	Product safety	20
	5.6.2.1	Safety shielding	20
	5.6.2.2	Inspections	20
	5.6.2.3	Supplementary protective measures	20
	5.6.3	Pressure vessels	20
	5.6.4	Exhaust gases and fumes	21
	5.6.5	Exhaust and heating systems	21
	5.7	Use of pressurized gases, liquefied gases, and flammable fluids	21
NEW	5.7.1	Pressurized and liquefied gas installations	21
	5.7.2	Flammable fluids	21
	5.8	Hazardous substances	21
	5.9	Protection against radiation	22
	5.9.1	Radioactive substances	22
	5.9.2	X-ray equipment, source of stray radiation	22
NEW	5.9.3	Laser devices	22
	5.9.4	X-ray systems and interfering radiators	22
	5.9.5	Radioactive substances	22
NEW	5.10	High-frequency equipment, radio communication systems, electromagnetic compatibility, harmonic components	23

	5.11.1	Forwarding agencies, cranes, forklifts, empties, freight	23
NEW	5.11.2	Customs	24
	5.12	Music at the tradeshow	24
	5.13	Hygiene of foodstuffs	24
NEW	5.14	Animals	24
	6.	Environmental protection	24
	6.1	Waste management	24
	6.1.1	Disposal	25
	6.1.2	Hazardous waste	25
	6.1.3	Own waste	25
	6.2	Cleaning, cleaning agents	25
	6.3	Environmental damage	25
NEW	Appendix:	Deutsche Messe AG – General Building and Site Regulations	26

1. Scope and General Regulations

1.0 Temporary measures against the spread of the SARS-CoV-2 corona virus

Due to the corona virus SARS-CoV-2 the technical guidelines will be extended by "Guidelines for the implementation of hygiene and infection protection measures" for the conference areas" was added. The organizer will receive these in the currently valid version.

1.1 Scope of Regulations

These technical regulations of Deutsche Messe govern the conference areas described in Section 3.2, held on the exhibitions grounds of Deutsche Messe. These regulations have been compiled to inform participants of measures deemed necessary during such conferences to ensure the safety of persons. These safety provisions are defined especially by the Lower Saxony Building Regulations (NBauO) and the Lower Saxony Law on Public Assembly Venues (NVStättVO).

These regulations are binding for all exhibitors, companies, organizations, and individuals who exhibit or perform other activities in Deutsche Messe's conference areas. The regulations form a constitutive part of Deutsche Messe's rental/lease agreements with its business partners, whereby the lessor shall be Deutsche Messe's contractual partner liable for compliance. Officials may enforce additional safety and fire protection requirements to address specific endangerment to life and property that may arise from the type of event planned.

Deutsche Messe reserves the right to have its staff spot check compliance of these regulations and/or official ordinances, prior to commencement of the subject conference. In the event that any problems identified are not resolved before the conference starts, or if an official ordinance is not observed, Deutsche Messe reserves the right to prohibit participation in the conference by the offending party for reasons of safety.

In addition to these regulations, Deutsche Messe reserves the right to institute other conditions or approve exceptions as deemed appropriate. An individual agreement executed by Deutsche Messe shall apply solely to the contractual parties and supersede these technical regulations. The wording of these regulations in German shall be deemed authentic.

1.2 General Regulations

The Appendix contains the General Regulations governing the exhibition grounds.

2. Traffic regulations, escape routes, safety installations

2.1 Traffic regulations

All traffic regulations, including instructions issued by marshalling service staff shall be obeyed to ensure the smooth flow of traffic during setup and dismantling periods, and while the exhibition is open. The German Road Traffic Regulations (StVO) apply on the exhibition grounds: cordoned-off areas and paths shall not be used and extra care and precautions shall be exercised in the presence of pedestrians.

The speed limit on the exhibition grounds is 20 km/h.

Vehicles may enter halls only upon permission granted by Deutsche Messe representatives or their authorized contractors. The speed limit within halls is 6 km/h.

Small electric vehicles like eRollers, eScooters, Segways, etc. shall not be used in halls.

Motorhomes/RVs shall not be used for overnight stays on the exhibition grounds.

Vehicles, trailers, container bridges, containers, boxes, or empties of any kind parked unlawfully on the exhibition grounds shall be towed away at the owner's/driver's risk and expense.

2.2

Escape routes

To ensure that fire trucks and ambulances have unimpeded access in emergencies, the following must be kept clear at all times:

- Emergency exits
- Aisles, corridors, and areas reserved for safety services
- Access routes for fire trucks and rescue services
- Vehicle approach routes to conference areas
- Fire hydrants (subfloor and above ground)

Doors along escape routes need to be kept clear so that they can be opened fully and easily without any additional means from the inside. Exit doors, emergency exits, and exit signs must not be blocked or obscured. Deutsche Messe reserves the right to remove any vehicles or objects at the owner's expense if they occupy or protrude into rescue routes, areas reserved for safety services, or corridors. During the setup and dismantling periods, materials may be placed in corridors/aisles, as long as they do not encroach upon the minimum safety width of 1.20 m or otherwise hinder traffic.

Aisles/corridors may not be used as assembly areas or to place machines like woodworking equipment or work benches. These must be cleared immediately upon request by the tradeshow company/organizer.

2.3

Safety installations

The following must be freely accessible and visible at all times:

- Firefighting installations
- Any other safety installations and related signs.

These shall not be obstructed by decorations, stands, or exhibits. Floor shaft covers must also remain accessible.

2.4

Security

Deutsche Messe provides for general surveillance of the exhibition grounds, but it does not guaranty absolute security and patrolling of the grounds. Exhibitors are responsible for arranging security surveillance of their rented spaces, exhibits, and other items they bring to the exhibition grounds. Deutsche Messe strongly recommends organizing timely surveillance.

Please note that only security firms authorized by Deutsche Messe are allowed to provide security services. Deutsche Messe reserves the right to license appropriately qualified firms to offer such services. These firms must be asked to present their license issued by Deutsche Messe, before being commissioned.

2.5

Emergency evacuation

In an emergency, it may be necessary to evacuate the conference areas and associated spaces. Evacuation orders may be issued by Deutsche Messe, the police, or fire department.

All persons in evacuation zones must follow these orders, which may be communicated either via a loudspeaker system (announcements and/or acoustic signals) or by on-site evacuation personnel. Further information will be provided at the official Assembly Points. Organizers and exhibitors must inform their staff members about these procedures, prepare and disseminate their own evacuation plans, if relevant, and ensure proper evacuation of occupied spaces in an emergency.

3.

Technical specifications and load limits for conference areas

3.1

Auditoriums, rooms, foyers

3.1.1

Lighting, type of current, voltage

Conference areas have an average luminance of 500 lx.

These areas offer limited options for power hookups, whose precise locations and capacities will be provided upon request. Type F (*Schuko*) sockets have a single 230 V 50 Hz outlet with a 16 A circuit breaker.

3.1.2

Power, water, and compressed air supply

Aboveground power lines are available in almost all areas. Precise locations and capacities of the outlets are stated on the layouts.

Deutsche Messe reserves the right to turn off power once the event is over.

Water and compressed air supply lines are not available everywhere, but could be set up by requesting Technical Services for Exhibitors.

3.1.3

Telecommunication lines

Telephone, data, and multiparty antenna hookups may be ordered for most areas, subject to verification by Technical Services for Exhibitors.

3.1.3.1

Exhibitor's own Wi-Fi (WLAN)

A Wi-Fi (WLAN) network must operate only in the 2.4 GHz band, not in the 5 GHz band, and comply with the IEEE 802.11g/n standards with a maximum channel width of 20 MHz (144 MB).

A Wi-Fi network may be set up for use within the stand only. Its transmitted power must be restricted for this purpose and scope and must not exceed -80 dBm at the stand perimeter.

The Wi-Fi may not be accessible by third parties, whereby unsecured network protocols are not permitted.

Exhibitors must notify Deutsche Messe of plans to use their own Wi-Fi (for the Internet or other such networks) via the event specific online shop, before the trade fair opens.

Transmitters not designed for Wi-Fi only are forbidden, because they can cause massive interference. If your exhibits use such transmitters, please contact the telecommunications representative (visit the shop). Any Wi-Fi transmitters in exhibits are also subject to the foregoing conditions.

In the event your own Wi-Fi network continuously disturbs other networks and/or the one operated by Deutsche Messe, or you do not comply with the above requirements, Deutsche Messe reserves the right to demand deactivation of your network.

In the event of severe breaches and/or continued interference and/or noncompliance with these requirements, the Technical Event Management of Deutsche Messe reserves the right to shut down your Wi-Fi network and Internet connection temporarily or permanently. The costs incurred for such measures, including all attendant costs for the Internet connection and related optional services will be charged to the offending exhibitor.

Further information can be found in the supplementary sheet WLAN.

3.1.3.2

Use of beacons

Normally, you must register any beacon(s) you plan to use, but this is not necessary when you order the beacon service from Deutsche Messe. Beacons not issued by Deutsche Messe must be listed and registered, for a fee, on our beacon management platform.

If you wish to install your own beacon, please complete our form *Beacon Registration* with details of the manufacturer, model, UUID, Major, and Minor. Submit this along with an outline of your stand showing where the beacon(s) will be placed.

Please note that the beacon must be installed in the center of your stand space, and the signal strength set low enough that the transmitted ad packets are accessible within your stand only.

Metal structures, wood and other materials may shield or totally block the signal. Therefore, we suggest setting up the beacon as high as possible and in the line of sight to the transmission area.

Deutsche Messe reserves the right to have a beacon removed, if it disturbs other services like a wireless LAN, or if it is installed outside your stand, or if you do not comply with any specifications herein. You shall bear the costs for removal of the beacon(s).

3.1.3.3

5G

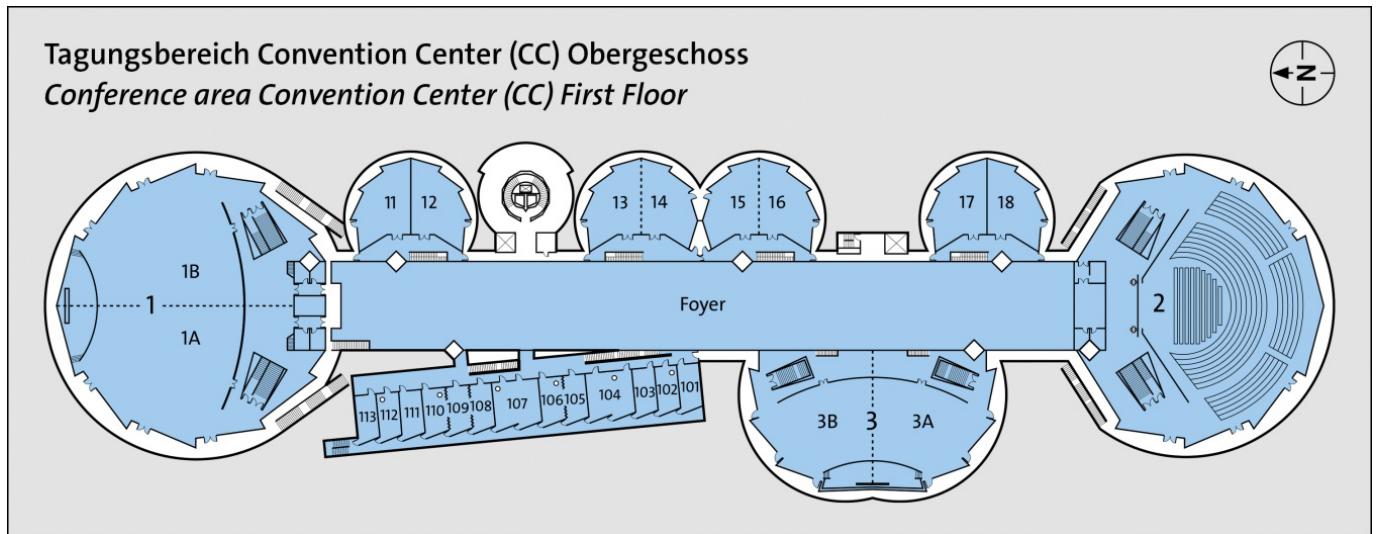
Deutsche Messe operates a 5G Campus network in the frequencies 3.7 to 3.8 GHz. The operation of infrastructure within this frequency range is reserved exclusively for Deutsche Messe. Access to Deutsche Messe 5G Campus network can be ordered by the exhibitor for a fee.

The operation of an exhibitor's own 5G network must be agreed with TVM before the start of the event.

3.2 Conference areas / Technical information

3.2.1

Technical information on conference area Convention Center (CC), First Floor



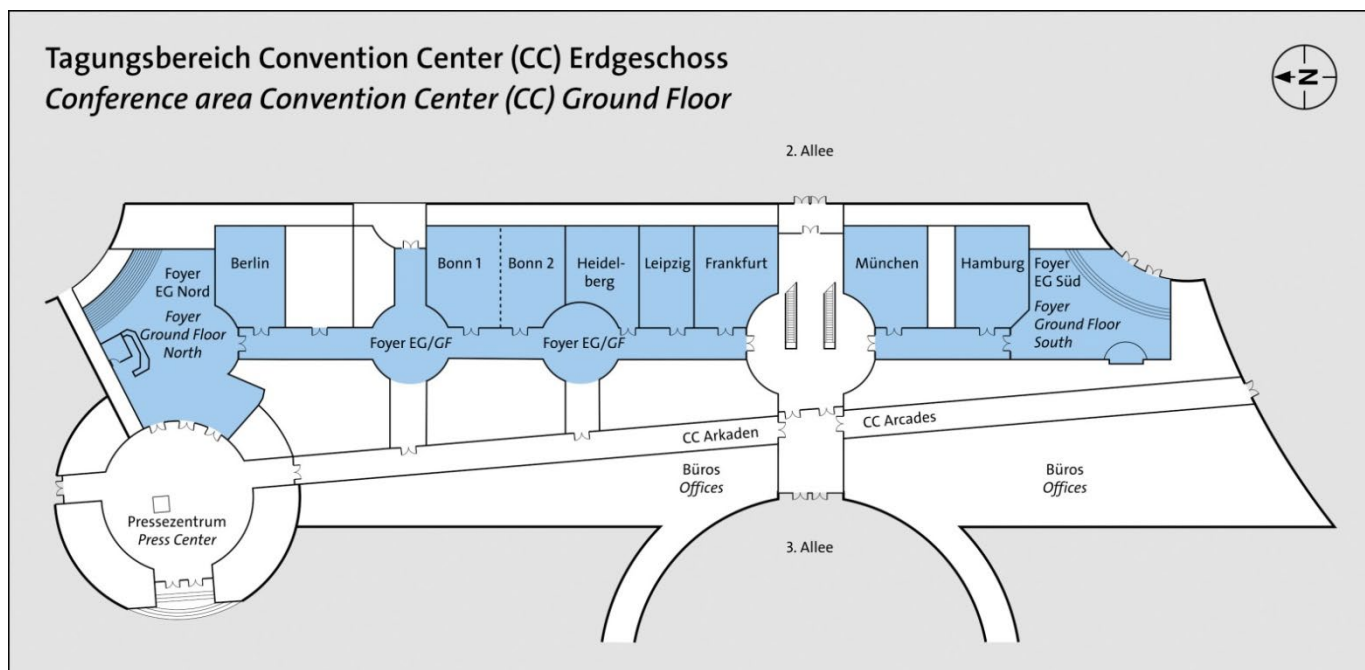
Room, Foyer	Floor area in m ²	Partition	Type of Floor	Max. floor load ¹⁾ in kN/m ² (partial areas)	Suspension of objects	Lighting	Blinds	Sprinkler system	Automated fire alarm system	Heating, Ventilation	A/C
Room 1	1260	●	Carpet	4	■	T + K	●	●	●	●	●
Room 2	971	○	Carpet	4	■	T + K	●	●	●	●	●
Room 3	622	●	Carpet	4	■	T + K	●	●	●	●	●
Room 11	105	○	Carpet	4	□	T + K	●	●	●	●	●
Room 12	105	○	Carpet	4	□	T + K	●	●	●	●	●
Room 13	105	●	Carpet	4	□	T + K	●	●	●	●	●
Room 14	105	●	Carpet	4	□	T + K	●	●	●	●	●
Room 15	105	●	Carpet	4	□	T + K	●	●	●	●	●
Room 16	105	●	Carpet	4	□	T + K	●	●	●	●	●
Room 17	105	○	Carpet	4	□	T + K	●	●	●	●	●
Room 18	105	○	Carpet	4	□	T + K	●	●	●	●	●
Room 101	25	○	Carpet	4	□	T + K	●	●	●	●	●
Room 102	27	○	Carpet	4	□	T + K	●	●	●	●	●
Room 103	27	○	Carpet	4	□	T + K	●	●	●	●	●
Room 104	60	○	Carpet	4	□	T + K	●	●	●	●	●
Room 105	30	●	Carpet	4	□	T + K	●	●	●	●	●
Room 106	27	●	Carpet	4	□	T + K	●	●	●	●	●
Room 107	60	○	Carpet	4	□	T + K	●	●	●	●	●
Room 108	30	●	Carpet	4	□	T + K	●	●	●	●	●
Room 109	30	●	Carpet	4	□	T + K	●	●	●	●	●
Room 110	30	●	Carpet	4	□	T + K	●	●	●	●	●
Room 111	27	○	Carpet	4	□	T + K	●	●	●	●	●
Room 112	27	○	Carpet	4	□	T + K	●	●	●	●	●
Room 113	27	○	Carpet	4	□	T + K	●	●	●	●	●
Foyer FF	-	○	Marble	5	■	T + K	○	●	●	●	●

Updated: 10/2014

10 kN = 1000 kp = 1 t

3.2.2

Technical information on conference area Convention Center (CC), Ground Floor



Room, Foyer	Floor area in m²	Partition	Type of Floor	Max. floor load ¹⁾ in kN/m² (partial areas)	Suspension of objects	Lighting	Blinds	Sprinkler system	Automated fire alarm system	Heating, Ventilation	A/C
Berlin	132	○	Carpet	5	□	K	○	●	○	●	○
Bonn 1	137	●	Carpet	5	□	K	○	●	●	●	○
Bonn 2	128	●	Carpet	5	□	K	○	●	●	●	○
Heidelberg	119	○	Carpet	5	□	K	○	●	○	●	○
Leipzig	113	○	Carpet	5	□	K	○	●	○	●	○
Frankfurt	147	○	Carpet	5	□	K	○	●	○	●	○
Munich	149	○	Carpet	5	□	K	○	●	○	●	○
Hamburg	143	○	Carpet	5	□	K	○	●	○	●	○
Foyer GF North	300	○	Carpet	5	□	K	○	●	●	●	○
Foyer GF South	150	○	Carpet	5	□	T + K	○	●	●	●	○

Updated: 10/2014

10 kN = 1000 kp = 1 t

3.2.3

Arcade Rooms

According to the building permit, these rooms in the arcades of the Convention Centre are exclusively designated as office / storage rooms and may therefore not be used as meeting rooms.

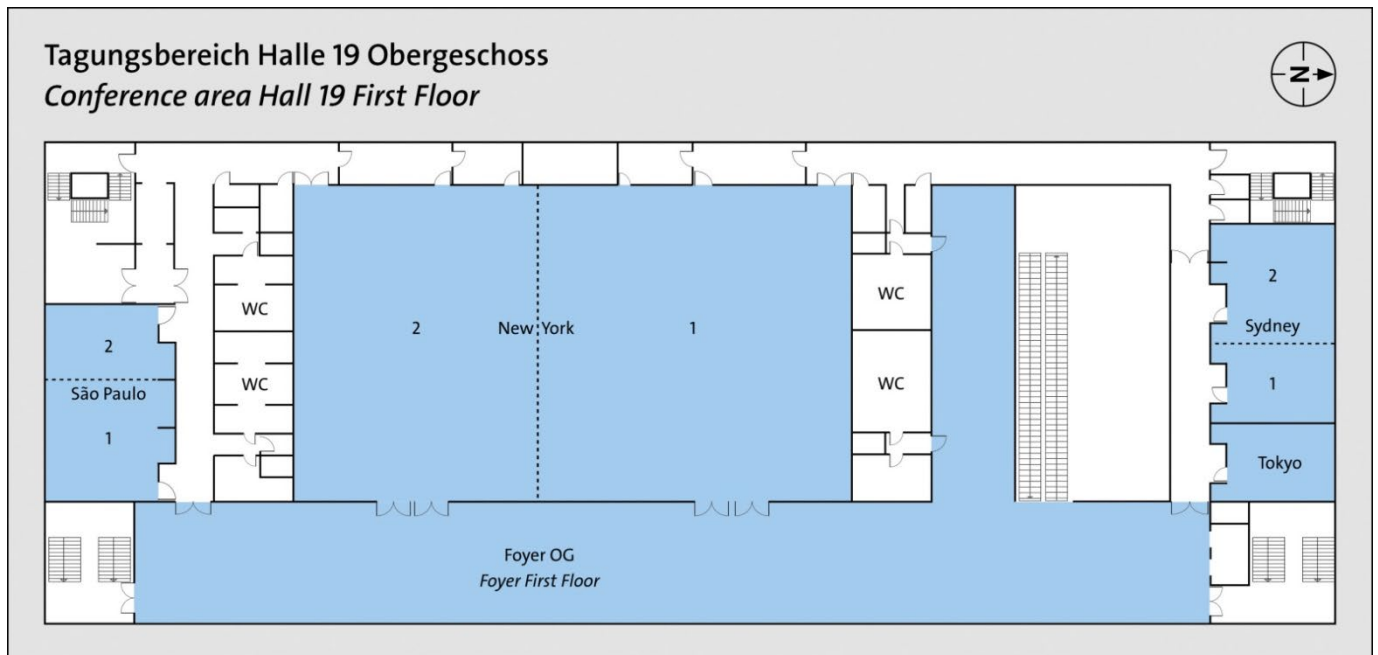
The rooms are not air-conditioned and the rooms to the west only have natural ventilation.

Seating is therefore only possible in office form or as block, U or O-shaped tables.

3.2.4

Technical information

Conference area, Hall 19 First Floor



Room, Foyer	Floor area in m²	Partition	Type of Floor	Max. floor load ¹⁾ in kN/m² (partial areas)	Suspension of objects	Lighting	Blinds	Sprinkler system	Automated fire alarm system	Heating, Ventilation	A/C
New York 1	435	●	Carpet	5	■	K	○	●	●	●	●
New York 2	324	●	Carpet	5	■	K	○	●	●	●	●
Sao Paulo 1	50	●	Carpet	5	□	T + K	●	●	●	●	●
Sao Paulo 2	33	●	Carpet	5	□	T + K	●	●	●	●	●
Sydney 1	33	●	Carpet	5	□	T + K	●	●	●	●	●
Sydney 2	50	●	Carpet	5	□	T + K	●	●	●	●	●
Tokyo	32	○	Carpet	5	□	T + K	●	●	●	●	●
Foyer FF	-	○	Porcelain stoneware	5	□	T + K	○	●	●	●	●

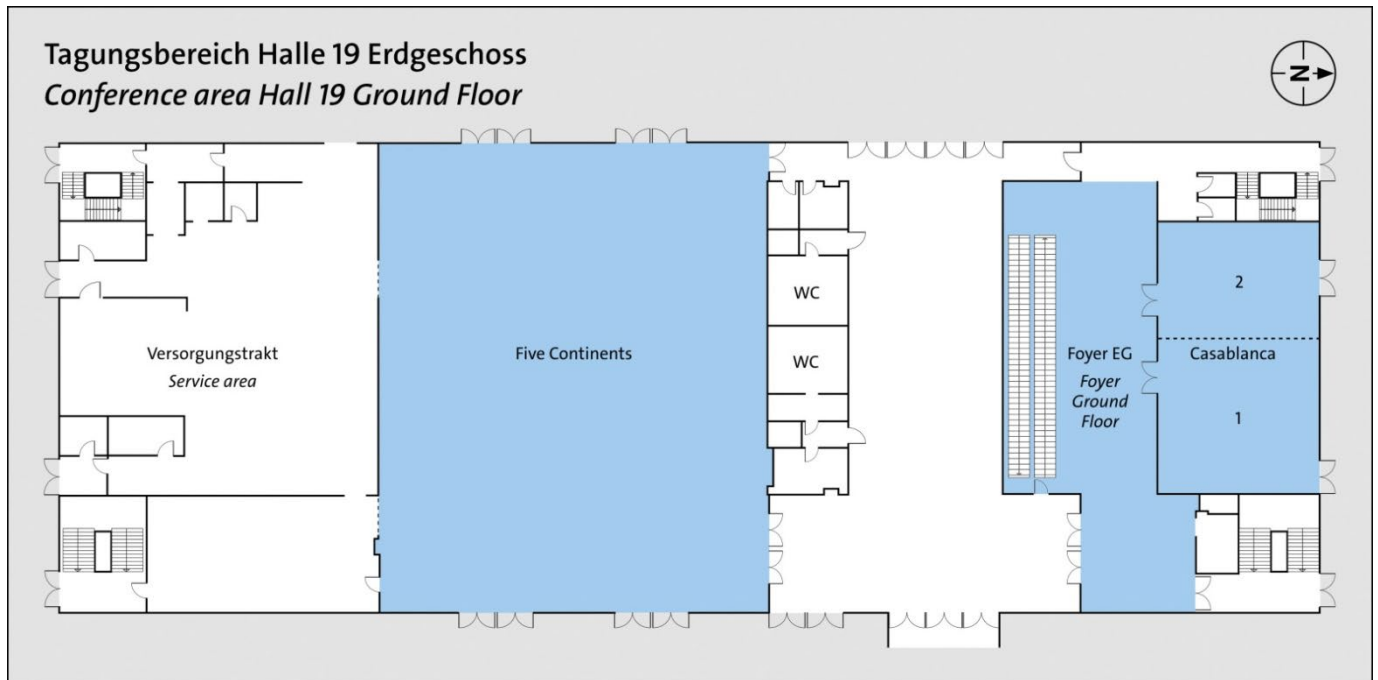
Updated: 10/2014

10 kN = 1000 kp = 1 t

3.2.5

Technical information

Conference area, Hall 19 Ground Floor



Room, Foyer	Floor area in m ²	Partition	Type of Floor	Max. floor load ¹⁾ in kN/m ² (partial areas)	Suspension of objects	Lighting	Blinds	Sprinkler system	Automated fire alarm system	Heating, Ventilation	A/C
Five Continents	838	○	Porcelain stoneware	5	■	T + K	○	●	●	●	●
Casablanca 1	98	●	Carpet	5	□	K	○	●	●	●	●
Casablanca 2	77	●	Carpet	5	□	K	○	●	●	●	●
Foyer GF	-	○	Porcelain stoneware	5	□	K	○	●	●	●	●

Updated: 10/2014

10 kN = 1000 kp = 1 t

Legend for tables

- T Daylight
- K Artificial light
- Feasible
- Not feasible
- In place
- Not available

1) The maximum permissible floor load is based on even distribution, but does not apply to loads on floor tanks and supply channels.

4. Building Regulations for Decoration Structures and Stands

4.1 Structural stability and safety

All decorative structures, stands, exhibits and advertising media must be erected in such a safe manner that public safety and order, in particular life, health and the natural foundations of life, are not endangered.

The organiser - or, in the case of Deutsche Messe events, the exhibitor - is responsible for the stability of all structures and exhibits. This also applies during assembly and dismantling. The load-bearing capacity of all components and materials must be guaranteed. Overall stability must be ensured by means of load-bearing materials and non-positive connections. Chipboard, fibreboard, etc. must not be used for load-bearing and load-dissipating purposes. Proof of this must be submitted to the Technical Event Management upon request.

Standing structural elements that can topple over (e.g. free-standing walls, high exhibits, high decorative elements) must be dimensioned at least for a horizontally acting equivalent surface load h .

$h_1 = 0.125 \text{ kN/m}^2$ up to 4 m height from ground level

$h_2 = 0.0625 \text{ kN/m}^2$ above 4 m height from ground level.

Deviations are possible in justified individual cases, in which case more precise proof must be provided.

Stand structures in the outdoor area must be dimensioned for the corresponding wind and, if applicable, snow loads.

The Technical Event Management reserves the right to have the stability of the stand checked by a structural engineer. The costs of this inspection will be charged to the organiser - in the case of Deutsche Messe events to the exhibitor.

4.1.1 Noncompliant stand structures

Stand structures, which have not been approved or do not comply with the Technical Regulations or official regulations, may have to be modified or dismantled upon request by Deutsche Messe. If this is not done by the set deadline, Deutsche Messe reserves the right to have the required work carried out at the expense and risk of the exhibitor.

4.2 Approval of stands

Under the assumption that exhibitors have observed the technical regulations, all pertinent laws, regulations, and accepted technical standards in designing their stands, it is generally not necessary to submit drawings for approval of stands with a floor area of up to 10 m^2 and an extension up to 10 m. Upon request, we would be pleased to check your stand blueprints.

Exhibitors must submit blueprints for stands larger than 10 m^2 (dimensioned floor plans, elevations) to the Technical Event Management at least four weeks before stand setup begins.

Approval is generally required for all structures in the open, mobile stands, tents, and containers. A structural engineer must certify all mobile stands and tents.

4.2.1 Inspection and release of decoration structures and exhibits requiring approval

All decoration structures, structures in the open, special structures, and exhibits above 2.75 m high require inspection and are subject to specific conditions.

Please submit the following materials to the Technical Event Management at least four weeks before setup begins:

- Statics computations on the structural stability. If this does not concern a simple structure, please submit statics computations based on German standards, as verified by a second independent structural engineer, in German;
- A drawing with numbered references;
- A description of the structure with a materials list (test certificate, etc.);
- Dimensioned structural drawings to a scale of 1:100, floor plan, elevations, sections, plus construction details on a larger scale, • If necessary, a layout showing escape routes and their lengths and widths in compliance with the Lower Saxony Law on Public Assembly Venues (NVStättVO).

4.2.2 Modification of noncompliant structures

Decoration structures or stands, which have not been approved or do not comply with the technical regulations, laws, and/or standards, may have to be modified or dismantled upon request by Deutsche Messe. If the necessary modifications are not done by the set deadline, Technical Event Management reserves the right to have the required work carried out at the expense and risk of the exhibitor.

4.3 Heights of structures

The height of a structure in conference areas is not to exceed 2.75 m. Higher exhibits require inspection and are subject to specific conditions (see Section 4.2.1).

4.4

Fire prevention and safety

4.4.1

Fire prevention

4.4.1.1

Decoration and stand setup materials

Any materials used in the construction or decoration of stands must be nonflammable and not drip while burning (no burning pieces/drops), pursuant to the DIN 4102-1 B1 or EN 13501-1 C s3 d0 standards. The use of materials that drip burning pieces/drops or give off toxic gases is prohibited. For safety reasons, load-bearing structural components may be required to meet special specifications (e.g. nonflammability). Decorations that are nonflammable and do not drip while burning (building material class C-s1-d0 per DIN EN 13 501-1) may be used outside fire-load free zones, at heights over 2.5 m above the floor, and in places that are out of reach (pursuant to §33(3) of NVStättVO).

Cross beams/ground support and lighting can be installed without restrictions at heights 2.5 m above the floor. Lighting must be at a distance of at least 0.5 m from flammable materials and sprinkler jets.

Nonflammable materials may be used in fire-load free zones, provided they do not hamper escape routes.

Pursuant to the DIN EN 13 501-1 standard, fixed or non-skid carpets of a Bfl-s1 quality may be installed in fire-load free zones in foyers. Carpets may neither be hung up vertically, nor used to cover stair steps.

Exhibitor stands in foyers may not have a horizontal enclosure above.

Exhibitors may be required to present a test certificate of the class of building material used.

Polystyrene, hay, straw, tree bark, peat, reeds, and similar materials do not usually satisfy the foregoing requirements.

Foliage or coniferous plants may be used only if they have moist, potted roots.

The use of plastic cable ties to affix statically loaded parts is prohibited.

Convention Center (CC) Foyer, First Floor:

Adjoining exhibits areas in the foyer of the Convention Center (CC) may not exceed a floor area of 50 m² with an extension of up to 10 m. Individual exhibit areas must be separated from each other by least 2.5 m. The total exhibit area at the foyer and wardrobe level each may not exceed 150 m². The distance to catering areas must be at least 2.5 m.

4.4.1.2

Displaying vehicles

Vehicles may only be exhibited and presented in the halls after registration with the Technical Event Management (TEM).tanks.

Unintentional or willful movement of the vehicles by third parties must be excluded by the exhibitor / organizers. Rescue cards must be kept on hand for electric and gas-powered vehicles.

In the case of electric vehicles, the charge level of the vehicle drive battery must be reduced to the level required for driving in and out and for presentation.

Charging processes are only possible after registering with the TEM. It reserves the right to exclude loading processes in the halls. Charging processes on electric vehicles cannot be implemented in Hall 8.

In the case of internal combustion engines and gas-powered vehicles, the tank capacity must be reduced to the level necessary for driving in and out of the vehicle. The reserve light of the fuel gauge must be active. If possible, the fuel filler cap shall be closed.

Depending on the event and the set-up location, TEM reserves the right to demand further safety measures such as disconnecting the battery for the on-board power supply, inerting the fuel tank and/or setting up safety guards.

4.4.1.3

Explosive materials and ammunition

Explosive materials are subject to the law on explosives and may not be exhibited. This also applies to ammunition as defined by gun-control laws.

4.4.1.4

Pyrotechnics

An application for the use of pyrotechnics must be submitted at least four weeks in advance of the tradeshow to the Technical Event Management, Deutsche Messe; moreover, a license is also required from the authorities.

Only a properly qualified and certified expert may use pyrotechnics of the category T1 and T2 with a valid BAM # and CE certificate that have been approved for use on stage. At least one fire safety expert must be on hand, at the expense of the exhibitor, as agreed in consultation with the Technical Event Management. The exhibitor shall assess the risk involved and clear this with the Technical Event Management. Proofs of the holder of the permit and the certificate of competence must be presented.

Compliance is required with all standards and accepted technical guidelines in effect, especially SprengG, SprengV, §§19, 20, 34, 35, and 41 of NVStättVO and DGUV-I 215-312 (BGI/GUV-I 812).

Applicants shall obtain approval from the authorities on time and submit such to the Technical Event Management, whereby the latter may require a "dress rehearsal" with all those concerned (without an audience).

4.4.1.5

Balloons

The use of balloons is subject to approval by the Technical Event Management. Helium-filled balloons may not be distributed.

4.4.1.6

Flying objects

Remote-controlled flying objects are not permitted within conference areas or in the open, except with prior inspection and approval in writing by the Technical Event Management.

4.4.1.7

Fog machines / Hazer

The use of fog machines is subject to advance clearance by the Technical Event Management.

They must not impair the function of the fire alarm system.

4.4.1.8

Open fires and flames

Open fires and flames or the use of fuels such as gas, gel fuel paste, or flammable fluids, or candles as table decoration are generally prohibited. However, one may use storm lanterns in a stable enclosure and an enclosed frame made of nonflammable materials (materials class A1 per the DIN EN 13501-1 standard) that protrudes at least 2.5 cm above the lower edge of the lantern's wick, provided both the table decoration and table cloth are made of at least a nonflammable class of materials (B-s1, d1 per DIN EN 13501-1).

Technical Event Management can be consulted for approval of product demos requiring dangerous fire acts, subject to the organizer arranging for a fire safety guard at his expense.

4.4.1.9

Welding, cutting, and similar work

All work of this kind must be approved in compliance with the German Employers' Liability Insurance Association Directive BGR 500 (Section 2.26) and relevant occupational safety regulations (Betriebssicherheitsverordnung). The company performing such tasks in fire and explosion hazard zones must present a hot work permit to the Technical Event Management.

4.4.1.10

Storage

Empty packaging may not be stored in conference areas, or obstruct rescue routes or areas reserved for safety services. Empty packaging can be stored by one of the forwarding agencies authorized by Deutsche Messe (Section 5.12). Deutsche Messe reserves the right to remove improperly stored empties at the expense of the offender.

The Technical Event Management may approve storage in certain rooms outside of the event area.

4.4.1.11

Fire extinguishers

All rooms are basically equipped with fire extinguishers. If add-on spaces (e.g. control rooms) are set up or if these create special fire risks, additional fire extinguishers must be installed based on occupational fire safety provisions ASR A 2.2 and the type of usage. This assessment shall not include any extinguishers located in conference areas. Fire extinguishers must be mounted on the floor or wall. The locations must be marked in accordance with DIN EN ISO 7010.

4.4.2

Horizontal enclosures and sprinklers

The conference areas are equipped with sprinkler systems. Heat-generating equipment may not be set up closer than 0.5 m from sprinkler jets, which are designed to activate at an ambient temperature of approximately 68° C.

Horizontal enclosures above stands are generally not permitted in the foyers.

A maximum of 20 m² of the space above floor areas of rooms and auditoriums may be covered, if the spaces are outfitted with sprinkler systems and certified from VdS for the use of such systems. A gap of at least 2 m must be maintained between covered areas of ≤ 20 m² each, to preclude the horizontal enclosure appearing as a connected unit. The Technical Event Management must approve all horizontal enclosures.

4.4.3

Glass and acrylics

Only safety glass appropriate for the intended purpose may be used. Before incorporating glass elements in floors, balustrades, facades and ceilings, please request the information sheet: "Use of glass and acrylic glass in stand setup and design inside fair halls" from the Technical Event Management. The edges of glass panes must be processed or protected in such a way as to rule out any possibility of injury. Construction elements made of glass only must be appropriately marked at eye level. Standard flammable acrylic glass must be enclosed in a metal frame or have smooth edges.

4.5

Exits and escape routes

Escape routes and emergency exits must be kept fully clear at all times. Assembly areas and other meeting rooms must have a minimum of two exits each, located at opposite ends and as far apart as possible, with each leading to escape routes. These are subject to the NVStättVO provisions in effect.

4.6

Platforms, ladders, stairs, raised walkways

Areas for pedestrians that are more than 1.0 m above adjoining areas must be secured by balustrades. The balustrade must be at least 1.0 m high (recommended height = 1.10 m), and consist of a top, middle and bottom rail. Depending on the intended usage, balustrades may also be required for lower areas. These structures are subject to inspection by the Technical Event Management. The floor must be designed for the intended use and to bear a minimum load of 3.0 kN/m² in accordance with the DIN EN 1991 standard (under due consideration of German application guidelines), while steps must comply with the DIN 18065 standard. A single riser platform for pedestrians may not be higher than 0.2 m. Ladders, stairs, and raised walkways must comply with the accident prevention regulations.

Moving platforms with machine drives (e.g. revolving platforms) must be monitored in the cavity with networked smoke detectors and are subject to acceptance. The alarm must always be audible at a constantly manned point on the stand.

4.7

Layout

4.7.1

Use of spaces

4.7.1.1

Inspection of spaces

The rented spaces will be handed over by Deutsche Messe in an empty and well-swept state. It is the responsibility of every lessor to check the location, size, and fixtures within the rented space.

4.7.1.2

Layout and machinery placement

Decoration structures must be kept within the rented space.

Machinery and other exhibits should be placed to provide adequate space for operation and display within the rented stand space or stand, and include room for safety barriers. Safety barriers must be erected commensurate with the existing danger (Section 5.6.2.1). The maximum permissible floor load must be observed.

4.7.2

Alteration of building structure

It is not permitted to secure exhibits or objects to any building structures or equipment, or to stick, paint, or bore anything onto such structures/equipment (Section 4.7.3).

4.7.3

Floors

Flooring should be laid properly to minimize the possibility of accidents, and may not protrude beyond the rented space boundaries. All materials used must be fully removed, especially double-sided tape, whereby oils, fats, paints, and similar substances that splatter on the floor are to be cleaned immediately.

Only marble-compatible adhesive tapes may be used on the foyer areas in the Convention Center

4.7.4

Suspension of objects

Objects may be suspended from ceilings in certain conference areas, upon submitting a request and obtaining approval.

Objects suspended from available hooks/points, or elevated crossbeams/ground support, or other structures must comply with recognized technical standards, and the provisions under Section 5.4 "Loads suspended above persons."

A scaled load diagram should be submitted for approval to Technical Event Management at least two weeks before the start of the event.

Manual chain hoists may only be used for statically determined systems. They must always be operated simultaneously by as many persons as there are manual chain hoists in use.

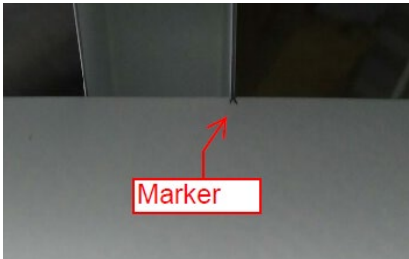
Electric chain hoists must be disconnected from the power supply in all phases during the event. Any deviation from this must be assessed and approved in writing by the TVM.

Objects suspended from the ceiling must not be connected to the floor or to standing objects.

The lamella ceilings in the Convention Center rooms are aligned in the direction of the carrier beams.

If lamellas are moved for the installation of suspension hooks or points, etc., these must be re-aligned after dismantling.

Markings are available for aligning the lamella profiles (see photo).



DMAG reserves the right to charge the tenant for lamella realignment if this rule is not observed.

4.7.5

Advertising and shows

Promotional activities are only permitted in the rented premises or on the exhibitor's own stand area. Sufficient audience space must be provided for this purpose. Advertising measures must not lead to obstructions or disturbances in adjoining premises. Shows or product presentations with show elements must be registered with the Technical Event Management. The safety regulations of DGUV-V 17 must be observed for show events.

must be observed.

The noise level emanating from the rented premises or from the stand must not exceed 70 dB(A) and must not drown out Deutsche Messe public address systems. During the presentation of exhibits or an appropriate special event, a short-term exceeding of the basic noise level by 5 dB(A) is permissible by way of exception. Compliance with the provisions of DIN 15905 must be ensured. Musical performances must be registered with GEMA (see also item 5.13).

4.7.6

Barrier-free construction

When building the stands, attention should be paid to accessibility. Stands and their facilities should also be accessible and usable for disabled people without assistance.

Appropriate ramps should be provided for this purpose (maximum gradient 6%, minimum width 1.20 m, non-slip flooring). Doors require a clear passage width of 0.90 m. Movement and circulation areas in rooms and corridors must be at least 1.50 m wide.

Further information is available from the Technical Event Management (TVM).

4.7.7

Laying of supply lines and inspection openings

Supply lines are generally laid aboveground. These must be secured by the exhibitor and/or his contractual partner to preclude any possibility of injury to persons or damage to the lines.

The exhibitor shall permit aboveground lines to be laid on his stand area and at stand boundaries not adjoining an aisle, for supplying third parties (Section 3.1.2).

4.7.8

Kitchens

For reasons of safety, kitchen appliances may be operated only for demos within the conference areas. Approval for this purpose must be obtained four weeks in advance of the event from the Technical Event Management.

4.8

Outside areas

4.8.1

Structures outside of the Convention Center

Structures and exhibits in the open require approval and are subject to special conditions. Only those in compliance may be operated, and these generally require certification and inspection. The following structural stability and safety laws and regulations apply: The Lower Saxony Building Regulations (NBauO), the Lower Saxony Law on Public Assembly Venues (NVStättVO), the regulations on construction and operation of temporary structures (FIBauR), and the DIN EN 13782 and DIN EN 13814 standards for temporary structures like tents.

The Hannover Building Authority shall be notified, pursuant to §84(6) of NBauO, in writing, at least 14 days before the inspection date for tents larger than $\geq 75 \text{ m}^2$ in size or other such temporary structures.

City of Hannover
Büro Oberbürgermeister
OE 15.5 Eventmanagement
Ihmeplatz 5
30449 Hannover
E-Mail-Adresse:
Veranstaltungsservice@Hannover-Stadt.de
Fax: +49 – 511-168-46766

[Download form: "Notice of approval of usage of temporary structures \(available in German only\)" by the City of Hannover](#)

Tents with a floor size $< 75 \text{ m}^2$ and similar structures (e.g. show trucks, LED trucks, etc.) are also deemed temporary structures, but are not subject to licensing and inspection by the authorities. However, these structures must comply fully with the technical structural stability requirements for temporary structures pursuant to DIN EN 13782. Evidence of verified structural stability shall be submitted during the registration process to the Technical Event Management (Section 4.2.1).

The organizer shall inform himself of the current weather conditions and forecasts (wind, heavy precipitation, hail, snow, frost, etc.) and undertake due measures.

4.8.2

Design loads, wind and snow loads outside of the Convention Center

Statics computations of loads shall be in accordance with the DIN EN 1991 standard, under due consideration of German application guidelines or relevant technical norms.

Exhibitors should be able to prove that they have accounted for wind push and pull loads on their stands and exhibits in the open pursuant to the DIN EN 1991 standard. Reduced wind loads may be permitted only if no additional safety precautions or removal/clearing are deemed necessary. The exhibition grounds are located in the wind load zone 2 at an elevation of $< 200 \text{ m}$ above sea level.

During snowy months of the year (October through April), the design shall be based on regular snow loads pursuant to the DIN EN 1991 standard.

4.8.3

Lightning protection

Structures and exhibits in the open must be equipped with fully functional lightning protection systems whenever their location, construction or use puts them at increased risk of being struck by lightning, or whenever a stroke of lightning could entail serious consequences. All structures and exhibits higher than 15 m must always be fitted with a lightning protection system in compliance with the DIN 57185/VDE 0185 standards.

4.8.4

Heating systems and devices

Heating systems and devices in the open require approval and are subject to special conditions. Technical data sheets of such equipment shall be submitted to the Technical Event Management, with details of the setup at least four weeks before commencing construction.

5.

Operating safety, technical safety regulations, technical services

5.1

General information

The organizer – or the exhibitor for events held by Deutsche Messe – is responsible for safety in his rented space and for compliance with industrial safety and accident prevention regulations. He shall also be liable for any damage that results from the setup or operation at his rented space or the exhibits displayed therein.

The conditions inside and outside the conference and open-air zones during the setup and dismantling period, are similar to those at a building site. The personnel working in this environment must be made aware of the dangers that exist.

Entering the exhibition grounds during setup and dismantling periods may be dangerous enough to require the wearing of personal protection equipment (PPE). Within the scope of their corporate responsibility, the organizer and exhibitor shall exercise their discretion to undertake a risk assessment and accordingly inform their staff, visitors, and contractors of the dangers that exist and provide them with appropriate PPE. Dust generation should be minimized during setup and dismantling periods.

Smoking is prohibited in the halls during setup and dismantling.

Any instructions/orders issued by the Labor Inspectorate, public order offices, trade association commissions for exhibitions, the police, fire department, or Deutsche Messe must be promptly obeyed at all times.

5.2

Use of machines and equipment

Woodworking machines may be used only if they are fitted with all the legally prescribed safety guards, including a wood-chip extractor and wood-chip catch pan.

Spray guns and cellulose nitrate varnish are not permitted.

Only the forwarding agencies authorized by Deutsche Messe are permitted to use cranes, power-driven forklifts with an operator's seat, forklift trucks, electric high- and low-pallet jacks with operator stance / seat and other material handling equipment on the exhibition grounds (see Section 5.12.1).

Hydraulic platforms may be operated by persons, aged 18 or over only, with qualifications equivalent to at least the DGUV-G 308 / 008 directive. They may be asked to present proof of an operator's license, valid commercial third-party liability insurance, a license to operate the platform in a closed space, and certification pursuant to the accident prevention regulations.

5.3

Seating plans and capacities

The rental agreement defines the seating plans and maximum capacities of persons permitted in the Convention Center and in the conference areas in Halls 19, pursuant to the NVStättVO provisions and as determined by Deutsche Messe. Lessors shall observe the respective seating plans for these spaces and the applicable layout for rental of empty spaces in foyers and aisles for setting up exhibits and catering services.

Special seating plan can be arranged in consultation with the Technical Event Management. A corresponding special seating plan according to NVStättVO must be drawn up by the applicant and must be approved by the Technical Event Management at least 3 weeks before the start of the event.

Any change in use, in particular an increase in the number of persons, requires the prior written consent of the Technical Event Management and requires an adapted seating plan.

5.4

Loads suspended above persons

Tools/rigging for suspending loads above persons should be selected and operated to ensure that these are held securely for the period of use. The contracting party shall allow only appropriately qualified persons to operate such tools/rigging. All such rigging shall comply with relevant guidelines and technical regulations per the directives DGUV-V 17 (BGV C1/GUV-V C1), DGUV-I 215-313 (BGI 810-3), igvw – SQ Q2, igvw – SQ P1 and igvw – SQ P2. For these tasks, the contracting party shall appoint an expert rigger, pursuant to the igvw – SQ Q2 regulation, with at least a Level 2 qualification.

5.5

Electrical installations

5.5.1

Power hookups

Aboveground power lines are available in almost all areas. Precise locations and capacities of the outlets are stated on the layouts. Deutsche Messe reserves the right to turn off power once the event is over.

5.5.2

Mobile electrical systems and operating equipment

Only qualified electricians may install, change, or service electrical systems and operating equipment, or a person working under the guidance and supervision of an electrician. In particular, mobile electrical operating equipment must be visually inspected by an electrician before being approved: it is necessary to ensure that the equipment is mechanically in order and fully functional, in particular that suspension and safety fixtures and mobile hookup and extension cables are secure. A test report pursuant to the DGUV-V 3 directive is to be prepared and upon request shown to the Technical Event Management. Applicable regulations are stated in the directives DGUV-I 215-310ff (BGI 810-ff), igvw – SQ Q1, and SQ P4.

5.5.3

Installation within a stand

Within the stand, exhibitors may use qualified staff to carry out installation work in compliance with pertinent regulations. A test report pursuant to the DGUV-V 3 directive is to be prepared and produced upon request. The exhibitor is responsible for any self-installed systems.

5.5.4

Installation and operation

The regulations of the Association of Electrical Engineers (VDE) must be observed, in particular VDE 0100 part 711 and IEC 60364-7-711; for low-voltage lighting the applicable regulations are VDE 0100 part 715 and VDE 0711 part 223.

Electric equipment and systems must exhibit sufficient immunity to interference commonly encountered in power supply networks, such as voltage dips, power surges, and harmonic components.

Earth (PE) and neutral (N) are always two separate wires and must never be connected. Power circuits should be split evenly to ensure uniform loads.

Motors with a power rating of more than 20 kW may be operated only if they have a current limiting starter.

With the exception of emergency lighting circuits, all sockets and lighting circuits carrying up to 32 A must be equipped with residual current devices (RCDs) with a nominal fault current up to a maximum of 30 mA. Cables in high-voltage and lighting circuits must have a cross-section of at least 1.5 mm². Flexible cables (including flat cables) must not be installed underneath floor coverings unless they have been sufficiently protected against mechanical loads.

5.5.5

Safety precautions

All heat-generating electrical equipment (hot plates, spotlights, transformers, etc.) must be mounted on nonflammable, heat resistant, asbestos free surfaces. Such equipment must be mounted at a safe distance from flammable materials depending on the heat generated, and adequate ventilation and exhaust must be provided.

No lighting may be mounted on flammable decorations or similar surfaces.

5.5.6

Safety lighting

General safety lighting should not be obscured in any manner.

5.6

Machinery, pressure vessel, and exhaust gas installations

The following regulations always apply to all types of machines and systems, including robots, whether stationary or mobile, controlled or autonomously operated.

5.6.1

Noise control

To minimize the exposure of all staff and tradeshow visitors, adequate noise reduction measures must be taken to ensure that the limit of 80 dB(A) is not exceeded by any machines or operations.

5.6.2

Product safety

All machines and equipment on display must comply with the Product Safety Code (ProdSG). Noncompliant machines and equipment must bear a clearly visible sign stating that they do not fulfill the requirements, and thus cannot be purchased until these requirements have been fulfilled. The manufacturer's conformity declaration must be available at the stand for equipment and tools that are CE certified.

During live demonstrations, stand personnel are required to take the necessary precautions to protect persons from bodily injury. Furthermore, Deutsche Messe reserves the right to prohibit the operation of any machines, apparatuses, and devices that may pose the risk of bodily injury and property damage.

5.6.2.1

Safety shielding

Equipment and machinery may only be operated if they pose no safety hazard. This means that the equipment and machinery must comply with at least one of the following regulations:

- The minimum requirements for protecting the safety and health of persons as laid down in the current EU guidelines, or
- The German accident prevention regulations.

Alternatively, other evidence may be provided that there is no safety/health hazard for persons.

The use of safe, transparent covers instead of normal safety covers is permitted. If the operating procedure prohibits safety covers from being mounted on the machine, appropriate barriers and warning signs must be set up to prevent unauthorized persons entering the danger zone around the machine. The exhibitor shall assess the risks and accordingly install the necessary safety shielding (see example under DIN EN ISO 13857, Safe Distances). If a machine is not to be operated, the safety covers may be removed, but these must be placed conspicuously next to the machine.

5.6.2.2

Inspections

The exhibited technical work equipment will be randomly inspected by the responsible supervisory authority within the framework of trade fair commissions with regard to their accident prevention and safety design

State Trade Supervisory Office Hanover
Authority for occupational safety, environmental and consumer protection
At the Listholze 74
30177 Hannover
e-mail: poststelle@gaa-h.niedersachsen.de
Phone: +49 (0)511-9096-0

If necessary, inspected together with the responsible trade association committees and checked for compliance with the safety requirements.

In order for the office to verify the CE marking, it is necessary to keep the EC declaration of conformity available for inspection at the exhibition stand. In cases of doubt, exhibitors should contact the responsible office well in advance of the start of the trade fair.

5.6.2.3

Supplemental protective measures

The use of stand construction tools, equipment and machinery is subject to recent testing and certification in accordance with the German Ordinance on Industrial Safety and Health (Betriebssicherheitsverordnung – BetrSichV), and no unsecured overhead loads are permitted if persons might be present below. For further regulations concerning overhead loads at events and productions, please refer to "Information 215-313" on overhead loads as issued by the German Social Accident Insurance (Deutsche Gesetzliche Unfallversicherung – DGUV, www.dguv.de).

Furthermore, technical and/or organizational precautions must be taken to rule out the danger of lifted loads, lifting machinery or any attachments thereof descending uncontrollably. This may, for example, involve cordoning off the danger zone, e.g. by means of hose burst protection valves or mechanical latching mechanisms to support hydraulic cylinders.

Exhibitors bear responsibility for safeguarding the safety of their stands and the safe showcasing and operation of all items on exhibit, as well as for providing proof of proper testing and certification. In response to justifiable concerns, Deutsche Messe AG reserves the right to hire a qualified tester/certifier to investigate, at the expense of the exhibitor involved.

5.6.3

Pressure vessels

Relevant occupational safety regulations must be observed in setting up, testing, and using pressure vessels or gas cylinders. The Technical Regulations for Pressure Vessels also apply.

5.6.4

Exhaust gases and fumes

Any exhaust gases or fumes produced by exhibits or machines must be vented outside via exhaust ducts, if the gases are:

- Flammable, or
- A health hazard, or
- A general nuisance.

Such exhaust gases or fumes may not be released into the conference areas. Please observe the Federal Emissions Control Act at all times.

5.6.5

Exhaust and heating systems

Use of furnaces and heating systems such as oil, gas and liquid fuel burners and fireplaces is forbidden.

5.7

Use of pressurized gases, liquefied gases, and flammable fluids

5.7.1

Pressurized and liquefied gas installations

The use of gases must be notified to Deutsche Messe in writing, stating the location.

The "Technical Rules for Liquefied Gas" DVFG-TRF 2021 and DGUV Regulation 80 "Use of Liquefied Gas" must be observed for the installation and operation of gas-carrying lines and system components. Installation may only be carried out by demonstrably competent persons and must be documented.

Main shut-off devices must be accessible and marked.

For demonstrations, only the daily gas requirement may be provided on the stand area. For propane gas, the liquid gas quantity of 11 kg must not be exceeded.

Gas may not be used inside the halls for catering purposes / cooking.

Delivery and removal of gas cylinders during the event may only be carried out by approved forwarding agents.

Toxic gases may not be used. Suitable fire extinguishers must be kept available.

If gas-powered exhibits are not shown in operation, the gas bottles present must be replaced by dummies and labelled as such.

When handling gases and gas cylinders, the accident prevention regulations and the Ordinance on Hazardous Substances (GefStoffV) must be observed. In addition, TRGS 510 and TRGS 800 must be applied. Safety and warning signs must be attached to storage areas in accordance with legal requirements.

If hydrogen is used, please contact TVM for further information.

As the operator of a gas-technical system, test arrangement or presentation, the exhibitor must prove that no hazardous product properties can occur within the presentation environment at the exhibition stand.

All components must be suitable for the application, adequately dimensioned and accompanied by appropriately qualified personnel.

The gas system must be inspected by an expert in accordance with DGUV Principle 310-005 before it is put into operation and may only be put into operation if the requirements of the expert are met. The expert is to be commissioned directly by the exhibitor. The inspection certificate must be kept on hand at the stand.

5.7.2

Flammable fluids

Open fires and flames or the use of fuels such as gas, gel fuel paste, or flammable fluids for decoration purposes, or candles as table decoration are generally prohibited. However, one may use storm lanterns in a stable enclosure and an enclosed frame made of nonflammable materials (materials class A1 per the DIN EN 13501-1 standard) that protrudes at least 2.5 cm above the lower edge of the lantern's wick, provided both the table decoration and table cloth are made of at least a nonflammable class of material (B-s1, d1 per DIN EN 13501-1).

The Technical Event Management can be consulted for approval of product demos requiring dangerous fire acts, subject to the organizer arranging for a fire safety guard at his expense. The installation of relevant equipment must be undertaken by qualified individuals. If flammable liquids are required for demonstration purposes, only a single day's supply may be kept in appropriate containers. Fire extinguishers suitable for burning liquids must be kept on hand in case of fire. Technical Event Management shall be notified accordingly at least four weeks in advance of such use.

The organizer shall assess the risk involved and clear this with the Technical Event Management.

Exhibitors shall observe all Industrial Safety Regulations (BetrSichV) and TRGS 510 guidelines.

5.8

Hazardous substances

Technical Event Management must be notified if hazardous substances or construction materials containing such substances are to be used, pursuant to the law on protection against hazardous substances, ChemG (German Chemicals Act), in conjunction with the regulations on banned chemicals (ChemVerbotsV) and hazardous substances (GefStoffV).

5.9

Protection against radiation

5.9.1

Radioactive substances

Radioactive substances must be handled and transported in compliance with the regulations on radiation protection. If the exhibitor does not possess a license to handle and transport radioactive substances, an appropriate application must be filed with the Hannover Labor Inspectorate (Gewerbeaufsichtsamt Hannover) at least two months before the tradeshow starts (see Section 5.10.3 for address). Notwithstanding the foregoing provisions, Technical Event Management and the Labor Inspectorate must be notified if radioactive substances are to be displayed and demonstrated.

5.9.2

X-ray equipment, source of stray radiation

Operation of x-ray equipment and sources of stray radiation are subject to approval and notification, and must be cleared with the Technical Event Management. These devices are governed by the RöV regulations on protection against harm from x-rays. An appropriate application must be submitted at least two months in advance of the tradeshow to the Hannover Labor Inspectorate (see Section 5.10.3 for address).

5.9.3

Laser devices

The operation of laser devices is subject to the accident prevention regulation DGUV-V 11, "Laser Radiation" (BGV B2), and the standards DIN EN 60825-1 and DIN EN 12254. Show lasers are also subject to the DIN 56912 standard.

Before using Class 3B, 3R, and 4 laser devices, exhibitors must inform the Technical Event Management of Deutsche Messe and officially designate a laser safety officer. Laser systems with a radiation of class 3R or higher in machines or exhibits are generally subject to approval.

The laser setup shall be inspected before use by an expert, and operated only if all conditions stated in the inspection report are fulfilled.

Please contact the Technical Event Management of Deutsche Messe to request the form and related instructions to register your use of laser equipment.

5.9.4

X-ray systems and interfering radiators

The operation of X-ray equipment and sources of interference is subject to approval or notification and must be coordinated with Deutsche Messe. The regulations on protection against damage caused by X-rays (Röntgenverordnung, RöV) must be observed. Appropriate applications must be submitted to the Trade Supervisory Office in Hanover at least two months before the start of the event. (Address see item 5.9.5)

5.9.5

Radioactive substances

The Radiation Protection Ordinance applies to handling and transport. If a permit for handling and transport has not yet been issued, the relevant applications must be submitted to the Trade Supervisory Office in Hanover at least two months before the start of the trade fair. Irrespective of the aforementioned approval, the exhibiting and demonstration of radioactive materials must be reported to Deutsche Messe and the Trade Supervisory Office.

Staatliches Gewerbeaufsichtsamt Hannover
Am Listholze 74
30177 Hannover
Tel.: +49-511/90 96-0
E-Mail: poststelle@gaa-h.niedersachsen.de

5.10

High-frequency equipment, radio communication systems, electromagnetic compatibility, harmonic components

The operation of high-frequency devices and radio systems is only permitted if they comply with the provisions of the Telecommunications Act and the Electromagnetic Compatibility of Equipment Act (EMVG).

The operation of wireless microphone and monitor systems in the frequency ranges between 470-608 MHz, 614-698 MHz, 823-832 MHz, 863-865 MHz and 1785-1805 MHz is not subject to registration.

Electrical installations for exhibits and stands must not cause any interference in third party systems in the form of harmonic components or magnetic fields. The Directive of the Federal Emissions Control Act must be duly observed.

In order to limit interference, the exhibitor shall comply with the VDE 0838 regulation on circuit feedback for devices rated at ≤ 16 A, the EVU regulation on electrical operating conditions for higher current devices (refer also to VDE 0839 Part 1), and the VDE 0875 and related regulations on radio interference suppression

Please address enquiries to:

Bundesnetzagentur
Außenstelle Hannover
Willestr. 2
30173 Hannover, Germany
Tel.: + 49 511 2855-0
Fax: + 49 511 2855-180
poststelle@bnetza.de
www.bundesnetzagentur.de
The required applications must be filed with this authority.

5.11.1

Forwarding agencies, cranes, forklifts, empties, freight

Permitted to use cranes, forklifts with an operator's seat, truck-mounted forklifts, electric high- and low-pallet jacks with operator stance / seat and other material handling equipment on the exhibition grounds.

The following firms only may perform forwarding services on the exhibition grounds, e.g. loading / unloading, delivering exhibits or stand equipment to stand, providing ancillary equipment or clearing customs for temporary / permanent importation of goods. Electric high- and low-pallet jacks without operator stance / seat can be used for assembly work at the rented stand space only. Loading / unloading and transfers on the exhibition ground are not allowed.

Kuehne + Nagel (AG & Co.) KG
KN Expo & Event Logistics
Logistikzentrum Messegelände Hannover
Karlsruher Straße 4
30880 Laatzen
Tel.: + 49 511 89-20701, 89-20702 und 820980-100
Fax: + 49 511 820980-20
exposervice.hannover@kuehne-nagel.com
www.kn-portal.com

Schenker Deutschland AG
Logistikzentrum Messegelände Hannover
Karlsruher Straße 10
30519 Hannover
Tel.: + 49 511 89-20061 und 87005-0
Fax: + 49 511 87005-150
fairs.hannover@dbschenker.com
www.dbschenkerfairs.de

The contracting party must ensure that his exhibits can be brought to and placed in the rented space. Exhibitors should arrange for delivery of large exhibits early in the setup period and accordingly contact authorized forwarding agencies. Empty packaging may not be stored in assembly areas or on stands, or obstruct rescue routes or areas reserved for safety services. Empty packaging can be stored by one of the forwarding agencies authorized by Deutsche Messe. The forwarder's liability ends with the delivery of the goods, including packaging, to the assembly area or exhibitor's stand; it recommences when goods are picked up again at the end of the tradeshow.

Please use the following consignment address:

Name of exhibitor
Event ... Building #, Room/Stand #
Messegelände
30521 Hannover
Germany

Deutsche Messe does not accept any consignments; please make necessary arrangements with one of the above forwarders.

5.11.2

Customs

Customs regulations will be provided, upon request, by the authorized forwarding agencies. For further information, contact any customs office or the German Chamber of Industry and Commerce. There is a customs office on the exhibition grounds:

Hauptzollamt Hannover

ZA Messe

Europaallee, Admin. Building 7

30521 Hannover, Germany

Tel.: + 49 511 89-20265, 89-20261

Fax: + 49 511 89-20358

poststelle.za-hannover-messe@zoll.bund.de

5.12

Music at the tradeshow

Musical renditions of any kind require the consent of the Society for Musical Performing and Mechanical Reproduction Rights (GEMA) in accordance with the relevant statutory provisions (Copyright Act).

Unregistered musical renditions may result in claims for damages by GEMA (section 97 of the German Copyright Act).

Registrations and inquiries: www.gema.de/messen

5.13

Hygiene of foodstuffs (extract)

For more information, please contact the City of Hannover:

Lebensmittelüberwachung

Am Schützenplatz 1

30169 Hannover, Germany

Tel.: +49 511 168 31152

Fax: +49 511 168 31233

Email: 32.21.3@Hannover-Stadt.de.

5.14

Animals

The introduction of animals into event areas is subject to notification and must be carried out in compliance with hygiene regulations, animal welfare and the evacuation of people and animals.

An evacuation concept must be agreed with Deutsche Messe AG.

Veterinary and official notification and authorisation requirements remain unaffected by this.

Animals should only be brought in if the topic of animals is part of the event content.

6.

Environmental protection

6.1

Waste management

All of the following rules are based on:

- The provisions of the Recycling Management Act (KrWG),
- Associated implementation regulations, and
- Applicable state laws and municipal statutes.

The organizer is responsible for the proper and environmentally acceptable disposal of waste produced during setup, running, and dismantling of his event (see rental and usage policy). The technical aspects of disposal for subsequent recycling are the sole responsibility of Deutsche Messe and its contractual partners.

6.1.1

Disposal

In accordance with the Closed Substance Cycle Waste Management Act, the Commercial Waste Ordinance (GewAbfV) and the Waste Framework Directive

(Directive 2008/98/EC as amended by Directive (EU) 2018/851), the generation of waste should be avoided as a primary objective during the setup, operation and dismantling periods at trade fair venues.

Exhibitors and their contractual partners are obliged to contribute to this goal at every stage of the event – a goal which must be pursued as early as the planning stage and in cooperation with all parties involved. As a general rule, reusable and environmentally friendly materials should be used to the greatest possible extent for stand construction and operation.

6.1.2

Hazardous waste

The organiser or his contractual partners are obliged to notify Deutsche Messe of any waste that is particularly hazardous to health, the air or water, or is explosive or flammable due to its nature, properties or quantity.

In addition, the exhibitor must ensure that the waste is properly disposed of by the responsible contract partner.

Examples of this type of waste are

- batteries
- varnishes
- solvents
- lubricants
- paints

Smaller quantities of these hazardous wastes can be disposed of on the exhibition grounds in the marked containers.

For the removal and disposal of larger quantities, the authorised company

REMONDIS Industrie Service GmbH & Co. KG

Zum Bahnhof 33 - 39

31311 Uetze

Phone: +49 5173 982038

Fax: +49 5173 982098

E-mail: uetzedispo@remondis.de

can be commissioned.

6.1.3

Own waste

Materials and waste may not be brought onto the exhibition grounds, unless these are directly related to tradeshow activities, setup, or dismantling.

6.2

Cleaning, cleaning agents

Only biodegradable cleaners may be used. Cleaning agents containing solvents harmful to health should be avoided. These may be used only in exceptional cases, subject to compliance with appropriate regulations.

6.3

Environmental damage

Deutsche Messe must be notified promptly of any environmental damage or pollution that occurs (e.g. spills of gasoline, oil, solvents, or paints).

Appendix

Deutsche Messe AG – General Building and Site Regulations

1. Scope of application

These General Building and Site Regulations (“General Regulations”) apply to the entire exhibition complex operated by Deutsche Messe AG, including entrance areas and car parks.

2. Landlord’s rights of control

The exhibition complex is private property and is subject to the rights of control of Deutsche Messe AG as the owner and landlord. Deutsche Messe may on a case-by-case basis temporarily transfer its rights of control to official organizers of events held at the exhibition complex.

3. Access to the exhibition complex

3.1

During events, access to the exhibition complex is restricted to persons in possession of admission passes valid for admission at the relevant event times. Pass holders must keep their admission passes with them until they leave the exhibition complex and must show them to Deutsche Messe AG security staff on request.

3.2

During set-up and takedown periods, Deutsche Messe AG is authorized to verify access accreditation (e.g. of stand construction and service-provider employees) by means of personal identity checks at the exhibition complex.

3.3

Children and young people under the age of 14 may enter the exhibition complex only in the company of a parent, guardian or suitable chaperone.

3.4

Animals, with the exception of assistance dogs, are prohibited unless Deutsche Messe AG expressly authorises them to do so, possibly subject to certain conditions.

Deutsche Messe AG may also prohibit the carrying of certain objects or make this generally or in individual cases dependent on the fulfilment of certain conditions. Section 5.3 of the House Rules remains unaffected.

4. Refusal of entry

Persons may be refused entry to the exhibition complex, without recourse or compensation, if they

- fail to comply with instructions given by Deutsche Messe AG security personnel,
- refuse consent to admission/security control measures,
- are observably under the influence of alcohol or drugs,
- observably have the intention of disrupting the event, or
- are the subject of a banning order barring them from entering the complex.

5. Security

5.1

All persons admitted to the exhibition complex are subject to and must follow the directions of Deutsche Messe AG security staff.

5.2

For security reasons, video surveillance cameras are in operation at the exhibition complex. Details of the associated data protection and privacy policy are on display in the entrance area.

5.3

The following items are prohibited at the exhibition complex: weapons, dangerous objects capable of being used as weapons or projectiles, fireworks, pyrotechnical materials and explosives. Exceptions to this prohibition require prior written approval from Deutsche Messe AG.

5.4

Deutsche Messe AG reserves the right at any time and without suspicion to search vehicle luggage/storage compartments and bags carried by persons.

6. General code of conduct

6.1

The exhibition halls, facilities, gardens and other amenities of the exhibition complex and the car parks must be treated with care and respect.

6.2

Littering of the exhibition halls and the grounds is prohibited. All waste, packaging, wrappers and paper must be disposed of using the bins provided.

6.3

All persons admitted to the exhibition complex must ensure that their conduct does not cause harm, hazard or unavoidable inconvenience to others. Persons admitted to the exhibition complex must refrain from all forms of conduct which have the potential to disturb the peace within the exhibition complex or adversely impact the image of the complex or event inside or outside the exhibition halls and other buildings.

7. Vehicular traffic

7.1

Deutsche Messe AG reserves the right to impose time and spatial restrictions on vehicular access to and on the exhibition complex, to prohibit such access outright, make it subject to certain preconditions and regulate it in any other way it sees fit.

7.2

The German road traffic regulations (StVO) apply throughout the exhibition complex. The maximum permitted vehicle speed at the exhibition complex is 6 km/h inside the exhibition halls and 20 km/h elsewhere. Vehicle operators and pedestrians must comply with all signs governing vehicular and pedestrian traffic. Specially marked areas, such as spaces for fire vehicles, emergency and escape routes and emergency exits, must be kept clear at all times.

7.3

Deutsche Messe AG is authorized to have removed without prior warning and at the operator or owner's expense any unlawfully parked or placed motor vehicles, trailers, containers, semi-trailers, swap bodies and the like and any obstructions of any kind.

8. Prohibitions

8.1

Unless they have obtained prior approval in writing from Deutsche Messe AG, exhibitors are prohibited from undertaking the following outside the confines of their designated display areas:

- any form of advertising, e.g. distribution or display of advertising material or setting up advertising structures,
- exhibitor or visitor surveys,
- commercial activities, such as the offering of goods or services of any kind for sale and the taking of purchase orders.

8.2

The operation of electric micro-vehicles (e-scooters, e-bikes, Segways) in the exhibition halls and other buildings is prohibited at all times. Electric wheelchairs are excepted from this prohibition.

8.3

The launching and landing of drones on the exhibition complex grounds on car parks is not permitted. Exceptions to this prohibition require prior written approval from Deutsche Messe AG.

8.4

Smoking in any form (including e.g. e-cigarettes) is prohibited on the exhibition grounds outside of specially designated smoking areas in all enclosed areas, including the halls.

8.5

The consumption of narcotics and cannabis is prohibited.

8.6

The carrying of extremist, racist and xenophobic materials is prohibited.

9. Photographic and video recordings

9.1

Photo, film and online productions ('productions') for commercial purposes require the prior written approval of Deutsche Messe AG. This does not apply to productions carried out by exhibitors themselves or by third parties commissioned by them on their own stands. Item 8.3 of these House and Site Regulations remains unaffected.

9.2

Deutsche Messe AG advises that photographic and video recordings may be made at the exhibition complex by Deutsche Messe AG or its authorized contractors or agents. Details of the associated data protection and privacy policy are on display in the entrance area.

10. Final provisions

In the event of violations of these General Regulations, Deutsche Messe AG reserves the right to eject the offending persons from the exhibition complex and/or bar them from the event in question, without recourse or compensation, by imposing a temporary or indefinite banning order.

Deutsche Messe

Infrastructural Facility Management



Deutsche Messe

**Deutsche Messe
Messegelände
30521 Hannover
Germany**

Tel. +49 511 89-0
Fax +49 511 89-3 26 26
info@messe.de
www.messe.de